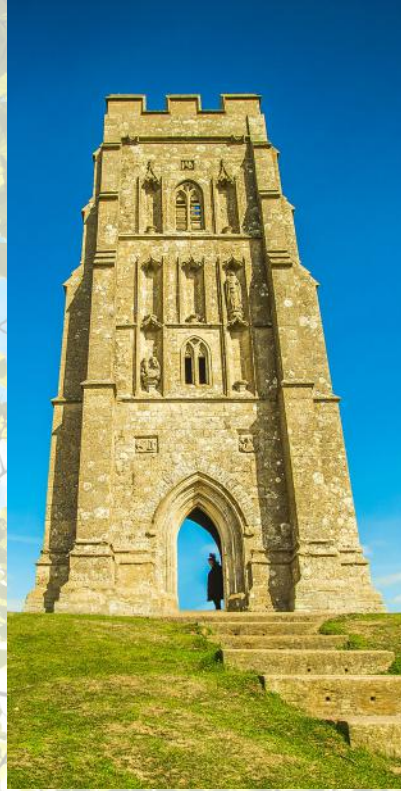


# Apple Cottage

— *The Experience* —



Part of the  **WOODLANDS** Collection  
— RETREATS —

In a quiet corner of *rural*  
**Somerset**  
sits a **welcoming** boutique retreat.....

With *stunning* views and  
**impressive** features like the ornate  
freestanding **BATH**, Apple Cottage  
offers guests a *luxurious* yet COSY  
*escape* in the heart of the  
**countryside**





## — Indulge & Escape —

“What a find!  
Apple Cottage  
is beautiful”

Surrounded by the rolling hills of the Somerset countryside, Apple Cottage offers a comfortable, stylish hideaway for couples, families and small groups.

Wake up in the elegant master suite and start the day slowly with the calming scents of Jasmine and Rose as you relax in to the stunning roll top bath, followed by a leisurely walk to the nearby farm shop and cafe for breakfast or a morning coffee?

With the Sedum Spa (exclusively available for use by our guests) just a short 10-15 minute drive from the property, making time for a welcome pamper session has never been easier. Use of the Spa is included throughout the duration of your stay and a variety of treatments are available to pre-book. Perhaps a refreshing Aromatherapy Facial or Swedish Neck, Back & Shoulder Massage?

The Natterjack Inn at Evercreech is a great place to sample some real ales or stop for a bite to eat if cooking doesn't appeal to you. And for the perfect end to a perfect day, sink into the soothing bubbles of your own private Hot Tub while you admire the beautiful Somerset skies by night.

“We spent many an hour  
chatting & gazing  
at the STARS above from the  
wonderful  
HOT TUB”



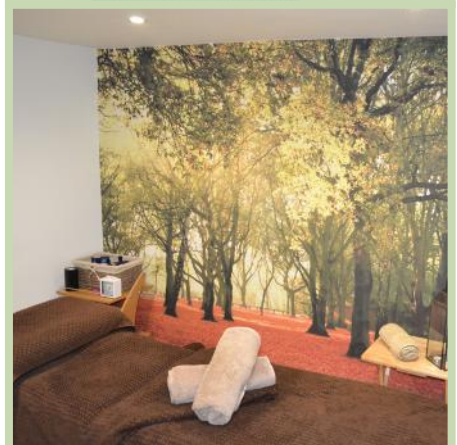
## —The Sedum Spa—

A 15 MINUTE DRIVE FROM APPLE COTTAGE

- 12x5m heated indoor pool with thermodynamic solar panels heating the water and air
- Lounging area surrounding the pool
- Sauna
- Nordic Outdoor Hot Tub
- Gym facilities with CV machines, free weights and cable machines
- 4 treatment rooms with a wide range of therapies available
- Relaxation room with gentle music & lighting to ease all your troubles away
- Separate male & female changing facilities
- Spectacular views of Glastonbury Tor from the Pool and Hot Tub

Just a fifteen minute drive from Apple Cottage....the Sedum Spa brings the hotel Spa experience to the self-catering sector, providing guests with the opportunity to truly relax and unwind. Use of the Spa is included in the cost of your accommodation and a variety of treatments can also be pre-booked as part of your stay. Payment for treatments is required in full at the time of booking.

\*Groups of more than 4 people are required to pre-book 2 hour Spa slots to use the facilities. Not for exclusive use\*





## — Celebrate and Discover —

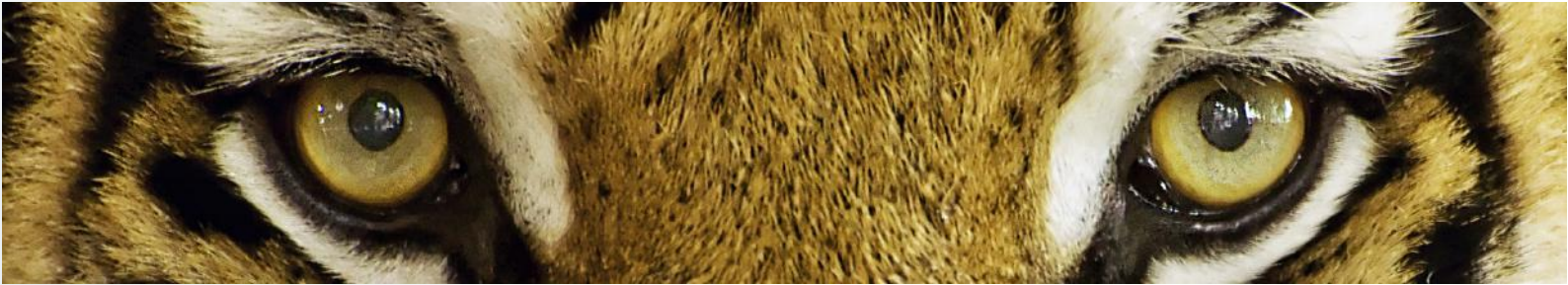
Sleeping up to 5 people, the property consists of 2 stylish en-suite bedrooms, a practical kitchen-diner, cosy lounge and sun filled 'green' room complete with bi-folding doors, perfectly connecting the inside with the large garden & patio. The property also benefits from a private Hot Tub & BBQ, providing everything you need to celebrate in style, and in *privacy*, with just the magnificent rolling hills & wildlife for company.

A *relaxing* retreat  
some *quality* **FAMILY** time  
a *cosy* birthday celebration  
a *w e e k e n d*  
getaway

No matter the reason, you're sure to have a truly  
*unforgettable* stay at Apple Cottage.







## — Find & Explore —

With it's quiet, secluded location, Apple Cottage is the perfect escape from the hustle and bustle of everyday life...yet surprisingly, it's ideally located to discover a huge variety of Somerset's best days out.



Wells Cathedral

Somerset is full of natural wonders and history. Famous for its festival and alternative nature, nearby **Glastonbury** is an experience like no other. Magical shops, original musicians and interesting cafes fill the town, as do the fascinating legends of King Arthur, believed to rest in the grounds of the **Abbey**. Whispers of mystery and magic also surround iconic **Glastonbury Tor** with its breathtaking 360° views; well worth the short uphill walk to reach the top.

**Clark's Village** provides a unique opportunity to relax, dine and shop, boasting over 90 designer and high street brands with up to 60% off every day prices. Famous for the Roman Baths and just a 45 minute drive from the property, the bustling city of **Bath** is another popular shopping destination, filled with beautiful architecture and street performers.

Nestled at the foot of the Mendip Hills and famed for its medieval architecture, nearby **Wells** is England's smallest city, home to The Bishops Palace and stunning Wells Cathedral. Slightly further away the town of **Cheddar** offers a variety of quaint shops, authentic Cheddar cheese and of course, an incredible **Gorge**. To really experience it's beauty, an open top bus ride is a must.

Approximately 45 minutes away from the property, **Longleat Safari Park** provides a unique and exciting day out for the whole family. Drive amongst Lions, Rhinos, Giraffes and Monkeys to name a few, before exploring the magnificent house and grounds. You can also make savings by pre-buying tickets in advance through the Longleat website.



Longleat Safari Park



Fleet Air Arm Museum

Two of the best museums the area has to offer are **Fleet Air Arm Museum** and **Haynes International Motor Museum**, both located along the A37 towards Yeovil. The naval air museum can be found at RNAS Yeovilton and is Europe's largest naval aircraft museum with flight simulators and much naval history to be explored. Haynes Motor Museum has a large selection of exotic, vintage and super cars on show, perfect for enthusiasts of all ages.





## — Activities —

At Woodlands Retreats, we appreciate that party planning can be stressful, especially for larger groups. Let us take the stress away with our collection of recommended activity providers. From relaxing Spa treatments at our very own Sedum Spa to Clay Shooting, Private Dining to Inflatable Disco's and Bungee Runs....we're confident our providers offer something for everyone.

“We were *impressed* by the  
the **WIDE** range  
of activities available  
to book”

Guests are required to contact the provider of their choice directly to make bookings and request quotes. Below are a selection of the more popular activities and guide costs. All prices are subject to change, and all activities are subject to provider availability. A full list of available activities and providers can be found on our website [www.woodlandsretreats.co.uk](http://www.woodlandsretreats.co.uk)

Private Dining	£45 - £55pp (+£65 table service)
Clay Shooting	£35 - £45pp
Afternoon Tea	£25pp
Cocktail Class	£35pp for 2 hours
Assault Course	£300 all day
Cupcake Making	£35 - £40pp
Spa Treatments	£35 (25 min) £60 (55 min)



# Apple Cottage

## — *What's Included* —

Everything at the house is included on a self catering basis such as all electric & utility costs. We supply a small selection of basic household items such as toilet rolls and coffee to get you started, but you may need to bring some of the below with you if you have a large group.

### Essentials

Bed Linen, Soap, Shower Gel

2 x Towels per person (1 x Large Towel & 1 x Small Towel)

2 x Toilet Rolls per bathroom

Tea, Coffee, Sugar, Salt and Pepper (enough to get you started)

Cleaning products, Dishwasher Tablets, Washing Up Liquid

Tea Towels and Bin Bags

1 x Kitchen Roll

### Kitchen

The Kitchen is fully equipped with; Pots & Pans, Frying Pans, Cooking Trays, Serving Dishes, Plates, Crockery, Knives & Forks, Glasses (Wine, Tumblers & Champagne) for the capacity of Apple Cottage, Food Processor, Scales, Rolling Pin, Jugs, Cheese Grater and much more. All the basics will be there, but if you require anything specialist you may need to bring this with you.

### Extras

Private Hot Tub

Welcome gift of local Ciders on arrival

1 x Charcoal Barbecue (charcoal not provided, we would recommend bringing easy light bags)

WiFi and Sky+ complete with Movies and Sports channels (not BT Sport)

Log Burner, with a basket of logs and kindling provided

Sunday checkout of up to 4pm, 10am all other days

**Use of the Sedum Spa is also included in the cost of the accommodation.**

**All treatments booked are an additional cost.**





## — Dining —

Eating in or eating out, Apple Cottage is just a short distance from a variety of restaurants, pubs, takeaways and supermarkets.

### Pubs & Restaurants

#### The Den @ Jon Thorners

Bistro style Cafe; everything from 3 course meals to coffee & cake.

[www.jonthorners.co.uk/the-den](http://www.jonthorners.co.uk/the-den)

1 mile from Apple Cottage

01749 838938

#### The Natterjack Inn

A traditional pub offering home-cooked food, real ales and fine wines.

[www.thenatterjackinn.co.uk](http://www.thenatterjackinn.co.uk)

3 miles from Apple Cottage

01749 860253

#### The Manor House Inn, Ditcheat

Fine dining in the pretty Somerset village of Ditcheat (also home to the stables of Paul Nicholls Horse Racing).

[www.manorhouseinn.co.uk](http://www.manorhouseinn.co.uk)

3 miles from Apple Cottage

01749 860276

#### At The Chapel, Bruton

West Country produce with a relaxed Mediterranean approach to British food.

[www.atthechapel.co.uk/restaurant](http://www.atthechapel.co.uk/restaurant)

7 miles from Apple Cottage

01749 814 070

#### BocaBar, Glastonbury

A cosy and relaxed venue with regular live music - perfect for dinner or drinks.

[www.glastonbury.bocabar.co.uk](http://www.glastonbury.bocabar.co.uk)

11 miles from Apple Cottage

01458 440558

### Takeaways

Murghal Empire, Shepton Mallet

Whitstones Fish & Chips, Shepton Mallet

Hong Kong Garden, Shepton Mallet

01749 346963

01749 344600

01749 342485

### Supermarkets

Tesco, Shepton Mallet

Aldi, Shepton Mallet

3.5 miles from Apple Cottage

3.5 miles from Apple Cottage